

**Empyrean Technical Solutions**

*Sky's the limit*





## Technical Support

A service that provides end users with step-by-step directions for how to fix a specific technical issue.



  
At ETS, we excel in 3D animation for the industrial and manufacturing sectors, with a focus on Ginn Mills and machine design. Under our founder's leadership, blending BIM, mechanical design, research, and IT expertise, we drive excellence in all projects.

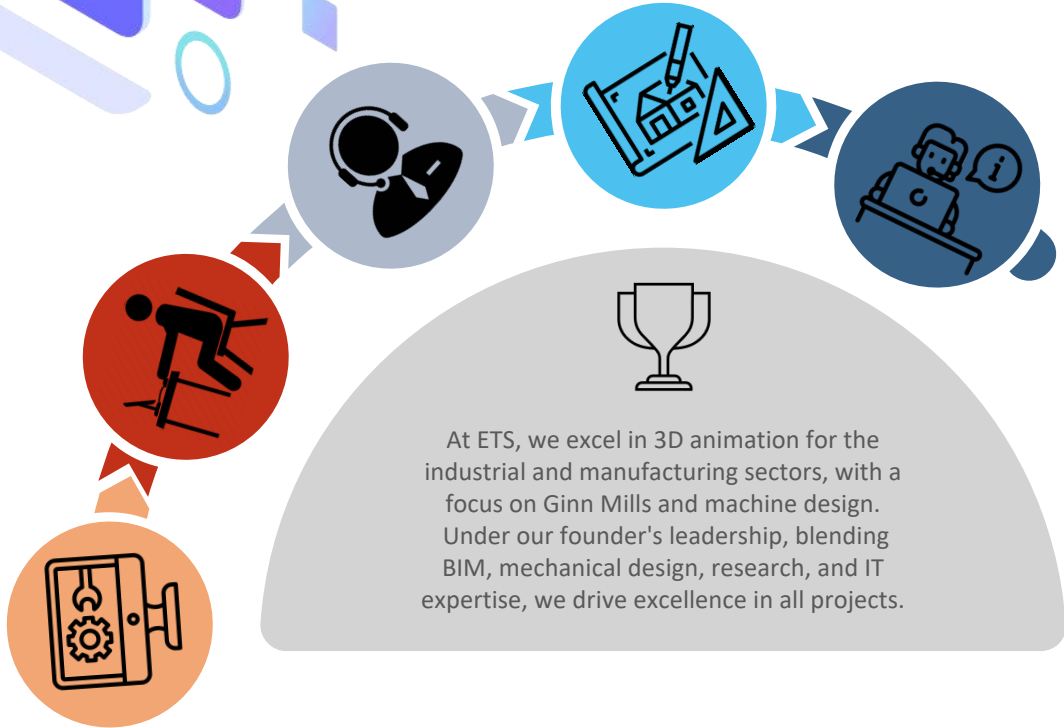


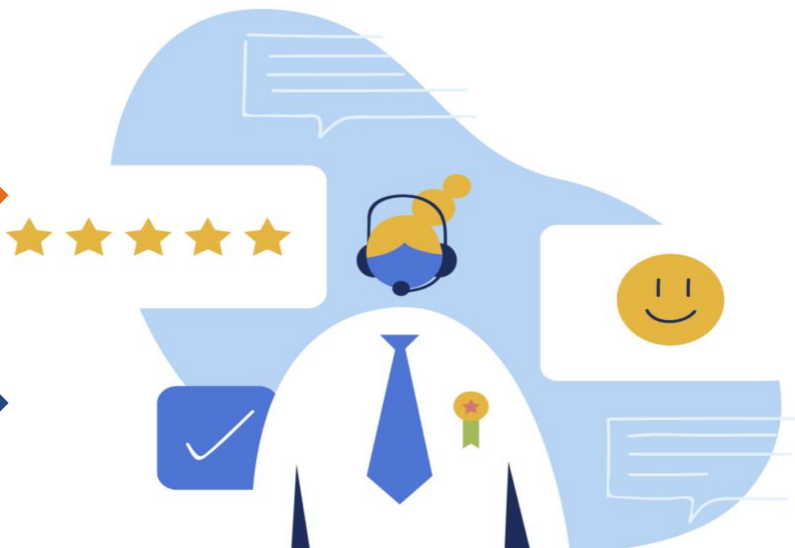
# Services



## Design & Development

UI Design: Craft aesthetically pleasing and functional interfaces.  
UX Design: Optimize user interactions and flows for an intuitive experience





## Customer Services

We deliver customer services that are both innovative and technology-driven, with a strong focus on a personalized, human-centered approach

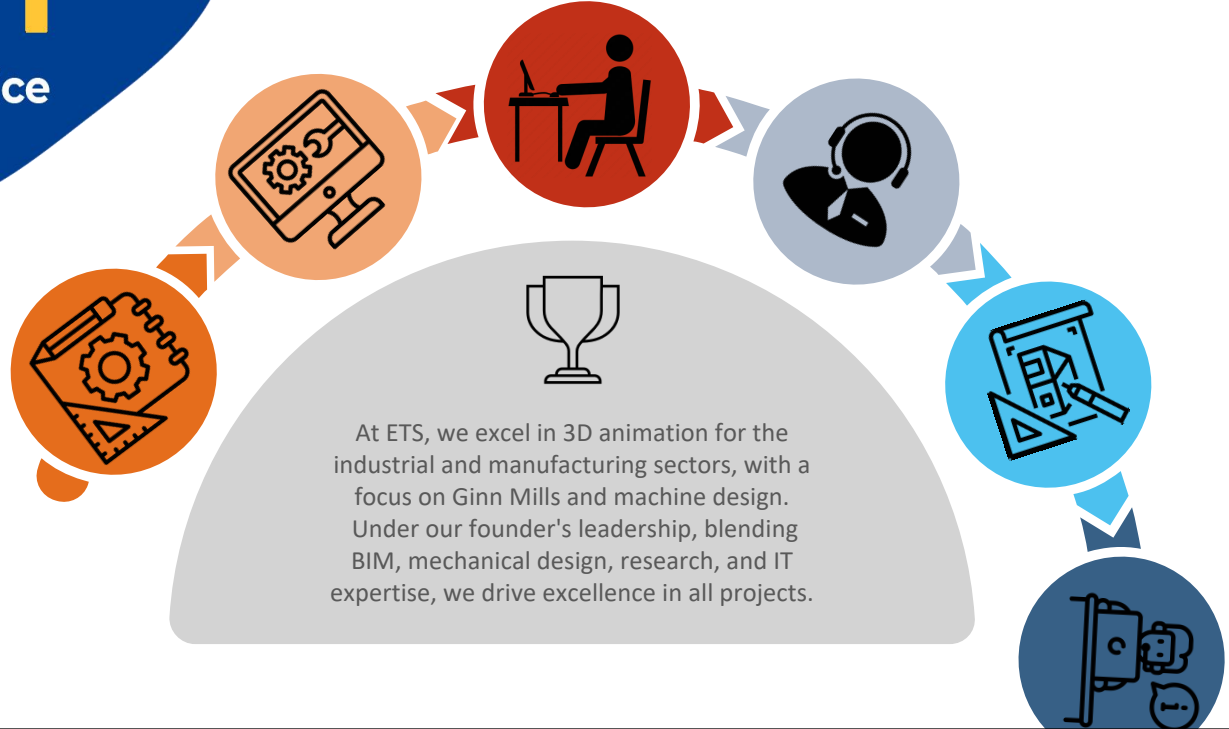




Back Office

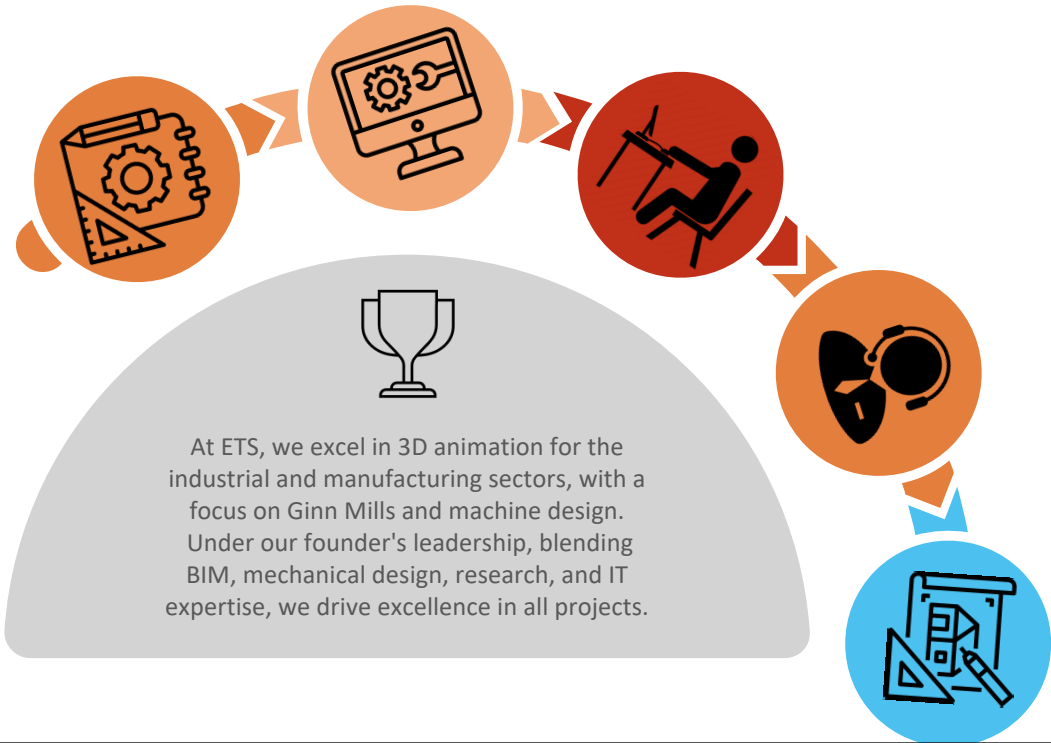
## Back office Works

We also offer comprehensive KYC verification and insurance claims services, ensuring secure identity validation and efficient claims processing



## BIM PEP modeling

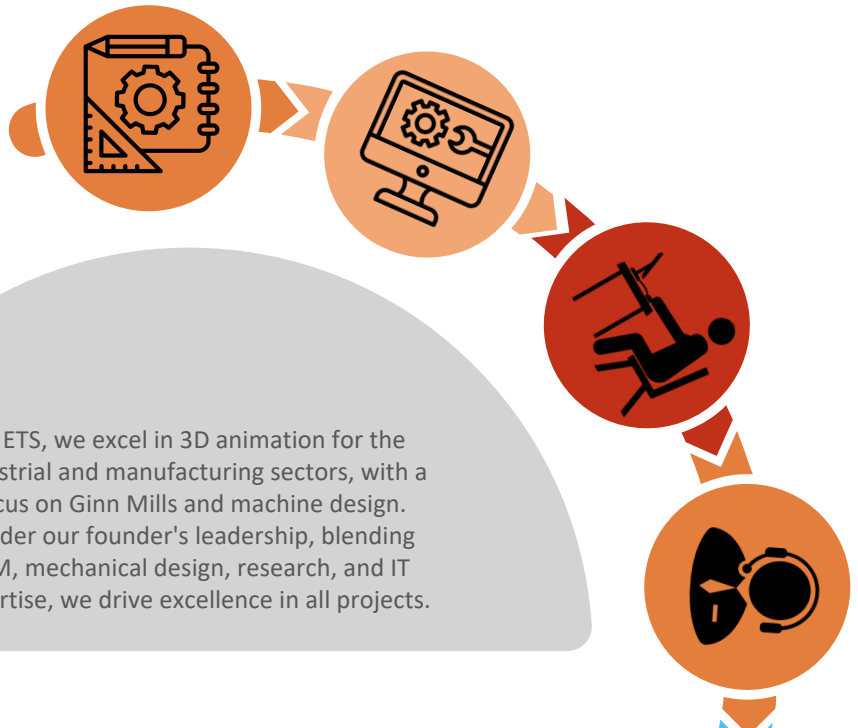
We provide high-quality BIM modeling services up to 7D, including rendering images and videos





## Engineering Design

we provide 3D animation services in industrial structures, Machine designs, with AR/VR technology in industrial mechanical and automobile sectors.



At ETS, we excel in 3D animation for the industrial and manufacturing sectors, with a focus on Ginn Mills and machine design. Under our founder's leadership, blending BIM, mechanical design, research, and IT expertise, we drive excellence in all projects.



# Why Empyrean?

## What sets us apart ?

- ❑ With a combined experience of over 70 years, our team of expert 3D animation design engineers and BIM modelers excels in the AEC and design industry. Unlike any other organization except Bajaj, we specialize in 3D animation for ginning and oil mill plants. Our unique expertise and industry-leading solutions make us the go-to partner for specialized animation and BIM modeling needs.

- ❑ Our distinctive edge lies in our proprietary frameworks, meticulously developed to optimize technical support and reduce costs.
- ❑ Problem Analysis Framework: Efficiently analyzes and categorizes support tickets for faster resolution.
- ❑ Root Cause Identification Framework: Identifies underlying issues without direct intervention, streamlining problem-solving.



Empyrean Technical Solutions

*Sky's the limit*

Thank  
You !

